

ICS Update

Colin Bradbury

North Somerset Health and Wellbeing Board

2pm, Wednesday 29th June 2022

The Integrated Care System in Bristol, North Somerset and South Gloucestershire

What is the Integrated Care System (ICS)?

Our Integrated Care System (ICS) brings a range of partners together to improve the health and wellbeing of everyone in our area. Known locally as the Healthier Together Partnership, the ICS includes Councils, NHS Hospitals, GP practices and community and mental health services.

What do we do?

Together, we work to improve health and wellbeing, reduce inequalities, and provide services for the 1 million people living in Bristol, North Somerset and South Gloucestershire. The ICS is made up of an Integrated Care Partnership (ICP), an Integrated Care Board (ICB) and six Locality Partnerships.

What is the Integrated Care Partnership (ICP)?

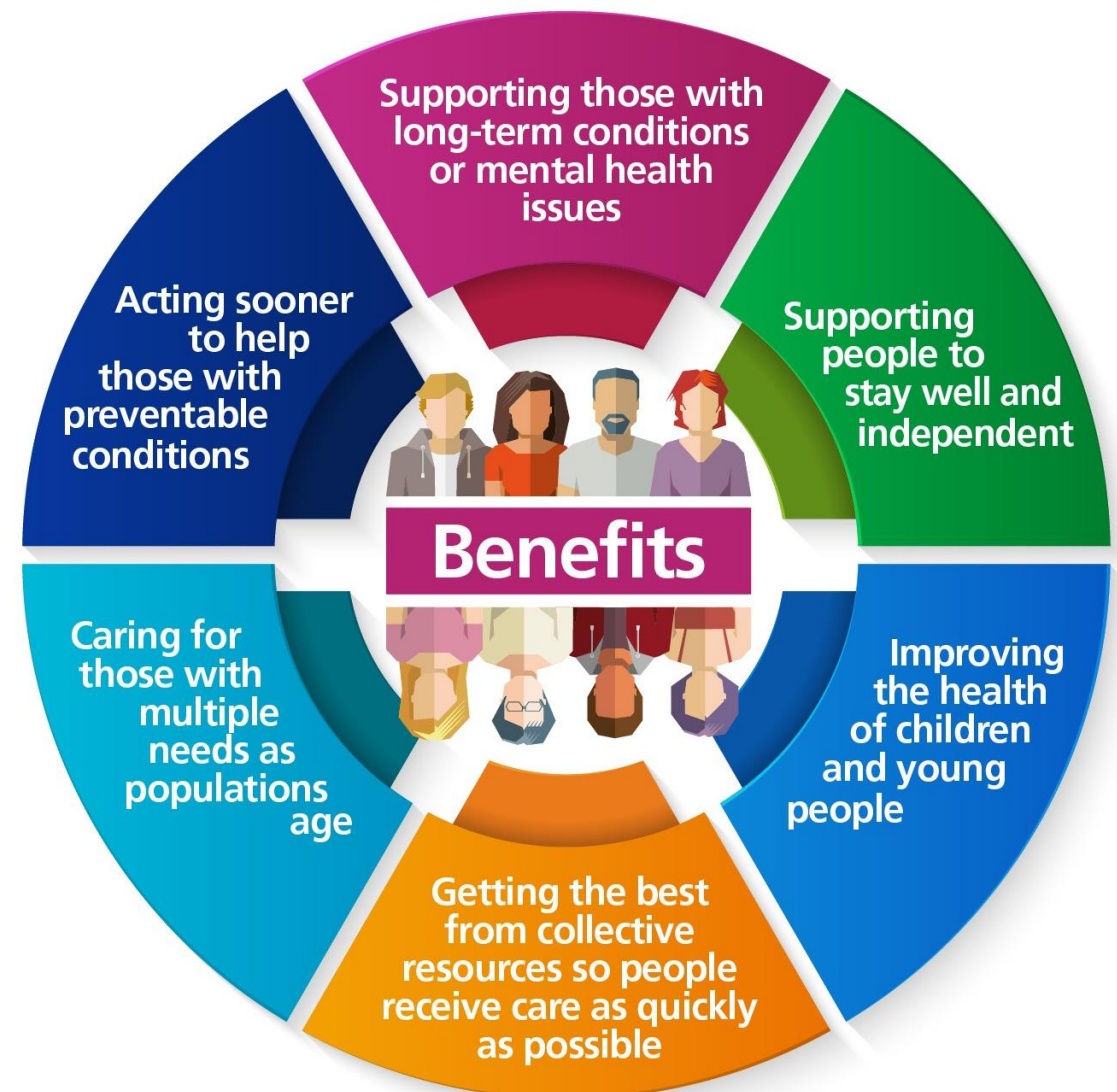
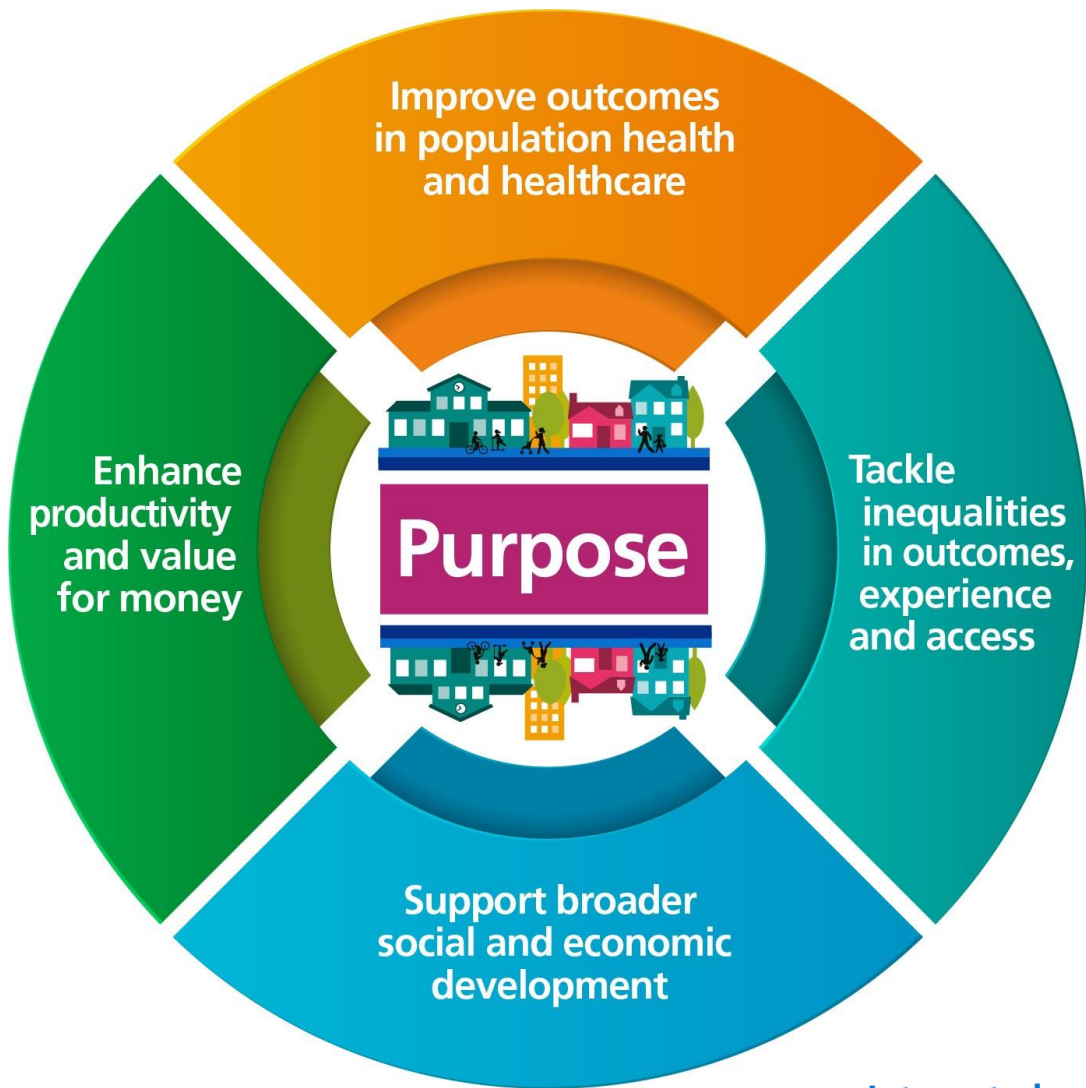
The Integrated Care Partnership is a statutory committee jointly formed between the ICB and the three local authorities in our area. It brings together a broad range of partners - including from the local voluntary sector and community groups - and sets strategy to meet the population's health, care and wellbeing needs. The ICP in our area has evolved from the Healthier Together Partnership Board.

What is the Integrated Care Board (ICB)?

The Integrated Care Board is the new organisation responsible for the day-to-day running of the NHS. The NHS Bristol, North Somerset and South Gloucestershire ICB takes account of population needs, arranges for the provision of services and manages the NHS budget. Now that ICBs are legally established, Clinical Commissioning Groups across the country have been abolished.

What are Locality Partnerships?

Locality Partnerships operate on a smaller scale within the ICS, responding to the unique needs of their local populations. The six Locality Partnerships in our area are South Gloucestershire, North and West Bristol, Inner City and East Bristol, South Bristol, Woodspring, and Weston, Worle and Villages. Locality Partnerships may include general practice, social care, community services, hospitals, voluntary sector, and mental health services – working alongside local people and communities to improve health and wellbeing.



**Integrated
Care Systems**



What will be different?*

- Redefining health policy around all the major factors that shape health, not just the activities of health and care providers
- Develop and implement system/ place wide solutions on complex problems such as access, hospital discharge and care for long term conditions, by:
 - incentivising outcomes rather than incentivising activity
 - meeting need rather than meeting demand
 - moving resources upstream
 - making decisions with the full involvement and input from those who are affected by those decisions

*Based on articles by NHS Confederation CEO

How might we do this?

- Realistic assessment of what can be achieved in the short term
- Focus more on what can be achieved and less on where the problems come from or where the solutions lie
- A bottom-up approach to strategy development
- Recognising that system working and collaboration are as demanding as market making and competition